

WideLux IR Armor Dome & Magnetic Gymbal

The VDA140S-IR is a stylish dome camera featuring several unique innovations, allowing unprecedented flexibility by its modular design. The Camera enclosure is dual-format, allowing surface mount with the base attached. Remove the base and you've got a flush mount dome camera!

Breaking traditions in Camera design, the VDA140 encloses the IR camera module into a round ball, and fits snugly into a magnetic cradle! This allows easy tool-less adjustment of the camera view, with granular positioning in the simplest way possible. And the ball can be quickly replaced if you need a different lens option or for servicing.

WideLux technology is unmatched in visual quality, with exceptional high resolution, WDR and low light sensitivity. And the integrated IR LED's provide illumination to extend visibility up to 66 feet, even in total darkness.



WideLux™



Conventional

Super Low Light Performance with Multi-Scan CCD.

Conventional WDR cameras use a Double Scan CCD to extend dynamic range. However, this comes at the expense of light sensitivity, requiring twice as much light compared to a Single Scan CCD. WideLux double scans the CCD in situations requiring WDR. When the ambient lighting becomes weak, WideLux reverts back to single scan mode, doubling light sensitivity.



WideLux



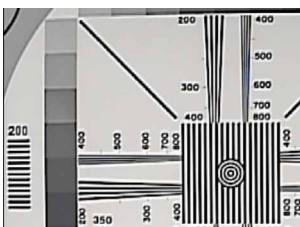
Conventional



WideLux

Linear Wide Dynamic Range

A normal WDR sensor has difficulty with low-contrast scenes. The non-linear process results in lower shadow detail in many scenarios. WideLux balances the wide dynamic process, retaining detail under a wider range of lighting conditions.



600/650 TVL High Resolution

The WideLux Image Signal Processor employs a special timing generator that extracts the maximum detail possible from the CCD, and provides superior detail in both vertical and horizontal planes.

WideLux Features

- 1/3" Sony Super HAD CCD II
- High Resolution 600 TVL Color, 650 TVL B&W
- 0.0001 lux min. Illumination (Sens-up)
- sWDR
- 2D/3D Digital Noise Reduction
- Electronic Image Stabilizer
- Anti-Color Rolling
- Highlight Eclipse
- Digital Image Stabilizer

Features

- IP66 rated, Vandal Resistant Design
- Unique Magnetic gymbal
- 3.3-12mm Varifocal Lens
- IR Illumination up to 66'
- Intelligent IR Compensation
- IR Cut Filter for True Day/Night
- Optical Photo Sensor for accurate Day/Night
- 12VDC/24VAC, auto-polarity

The VDA140 uses a unique magnetic cradle that firmly hold the camera module in place. This allows easy adjustment of view, without tools. The dual mount base can be easily configured for either surface or flush mounting.



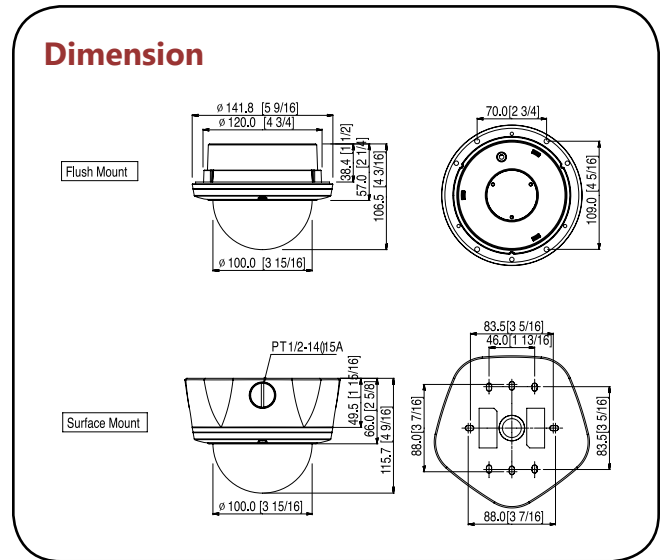
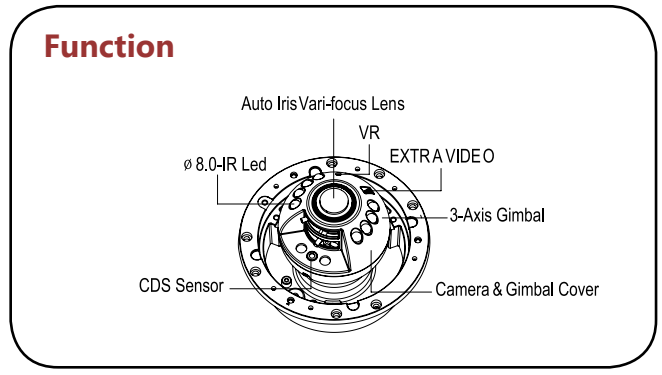
VDA140S-IR SPECIFICATIONS

Video	
CCD Sensor	1/3" Sony Super HAD CCD II
Effective Pixels	768x494
Horizontal Resolution	600 TVL (Day) / 650 TVL (Night)
Sync	Internal
Scanning System	NTSC 525 lines; 2:1 interlace
Video Output	1.0 Vpp composite 75 ohms
Lens	3.3-12mm Varifocal
S/N ratio	>52dB (AGC Off)
Minimum Illumination	0.1 lux (Sens-up off), 0.0001 lux Sens-up
Gamma Correction	Standard $\gamma=0.45$
Smear Effect	0.005%
IR LED	850nm @ 30 degrees
IR Beam Distance	66' (20M)

Connectors/Switches	
Main Video Output	BNC x 1, 1.0Vpp, 75 ohm, composite video
Service Video Output	BNC x 1, pigtail cable with pcb plug
RS485	2 wire pigtail. Pelco P Protocol

Other	
Power Requirements	12VDC/24VAC dual voltage, auto-polarity 12VDC 200mA, w/ IR 400mA max 24VAC 90mA, w/ IR 190mA max
Operating Temperature	14F-122F (-10C+50C)
Humidity	Within 90% RH
Dimensions	150mm x 115.7mm (Diameter x Height)
Weight	2000 grams maximum
Environmental Rating	IP66

WideLux OSD Features (accessible by RS485 only)	
Camera Title	15 Char. alphanumeric, adjustable position
Automatic Gain Control	Off/Low/Middle/High
Shutter	1/160-1/90,000 sec/A. FLK/Off/Auto/X2-X512
Sens-Up	Off/Auto 2x-Auto 512x
WDR/BLC/ECLPS	WDR: Low/Middle/High (Highlight) Eclipse: Programmable BLC: Low/Middle/High
White Balance	ATW/Push Lock/Manual/Col-Roll
Digital Noise Reduction	2DNR/3DNR programmable
Effects	Digital Zoom: 1x-6x Image Freeze: On/Off D-Effect: Off/Rotate/Mirror/V-Flip
Motion Detection	8 Programmable Zones
Privacy Mask	8 Programmable Zones
Language	English/Francais/Espanol/Russian/Korean
Digital Stabilizer	On/Off
RS485	Pelco D, Programmable



VDA140S Series Optional Accessories

Model	Description
VDA110WM-KIT	Wall mount kit; Includes VDA110DC Dome cover & VHM-370WM Wall bracket
VDA110PM-KIT	Pendant mount kit; Includes VDA110DC Dome cover & VHM-370PM Pendant bracket
VHM-370PO	Pole Mount
VHM-370CM	Corner Mount
VDA110-HEATER	User installable Heater to allow use to -40F (-40C), 24VAC Note: Use of Heater requires operation of camera at 24VAC only

VD140S Series Feature Matrix

Model	Description
VDA140S-VFAL12	WideLux Indoor Dome Camera without IR LED's
VDA140S-VFAL12IR	WideLux Indoor IR Dome Camera

VDA140 Series Model Variant

Model	Description	IR
VDA140CHSR-VFAL12	1/3" Sony Super HAD II, 500/560 TVL, 0.1 lux @ f1.3, 0 Lux w/ IR, ICR,	No
VDA140CHSR-VFAL12IR		20m

