



## IP Series Cameras

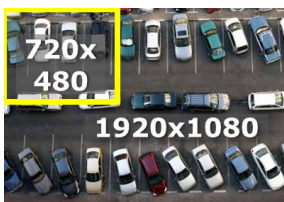
Visionhitech is proud to offer a complete line of megapixel and D1 resolution IP cameras to cover any networked surveillance application. Choose from Standard, armor dome, bullet and PTZ dome configurations to fit your environment. Selectable H.264/MJPEG compression and Dual Stream allows simultaneous transmission of different resolution to a live viewer and NVR. 2 way audio is supported, allowing remote monitoring and talkback. PoE and 12VDC power inputs provide flexible installation options.



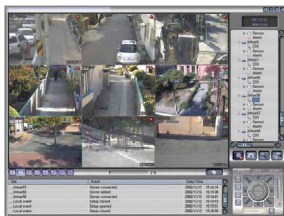
Driving IP-based physical security through global standardization



H.264 & MJPEG codecs allow you to select the best compression for the job. Dual Streaming allows simultaneous transmission of high rez images to NVR, and high frame rate video for live viewing.



Available in standard 720x480 resolution at 30fps. For high definition, select from 2 different megapixel resolutions; 1280x720 or 1920x1080.



Live view

Connect to the IP camera via Web browser, 3rd Party VMS or included Central Monitoring Software. CMS offers real time A-V monitoring with connections to video servers and multiple IP cameras. Additionally, you can record, play back, monitor events/ alarms and control PTZ functions remotely.



Search view

eMap

## Available Features

- TCP/IP 10/100 BaseT Interface
- 720x480 @ 30fps
- 1280x720 @ 30fps
- 1920 x 1080 @ 15fps
- ONVIF compatibility
- Intelligent IR compensation
- 2D Digital Noise Reduction
- Adaptive Tone Reproduction (ATR)
- Highlight Compensation
- SD Card slot for local recording
- Privacy Mask
- Heater (for -40F operation)
- Up to 37x PTZ
- PoE or 12VDC power

## Network Features

- TCP/IP 10/100 BaseT Interface
- H.264/MJPEG codecs
- Dual Streaming
- Full Duplex, 2 way audio
- Connect via Browser or included NVR Software



# IP Series Camera SPECIFICATIONS

<b>All Models include:</b>	<b>ONVIF Core 1.02 compatible, Dual Streaming H.264/MJPEG, 2-way Audio, Privacy Mask, Day/Night settings , Auto WB, Exposure, Effect. -25F-122F operation. Event Detection: Motion, Alarm in, Use with any Web browser. Notification: FTP, email, CMS. Protocols: HTTP, HTTPS, FTP, SMTP, UPnP, DNS, DDNS, NTP, RTSP, RTP, TCP, UDP, ICMP, DHCP</b>
<b>All EH Models include:</b>	<b>1/3" 960H Sony Ex-View HAD CCD II, Sony Effio-E chipset</b>
<b>Resolution/Frame Rate:</b>	<b>3MP/Full HD: 1920x1080 15fps, 1.3MP HD: 1280x720 30fps, D1: 720x480 30fps</b>

## Night Vision IP Cameras IP67



Model	Resolution	Lens	IR Distance	Power	Features
VN7XSM3i VN7XSMi	3MP, 15fps 1.3MP, 30fps	TBD 5-60mm Zoom	50m	12VDC/ PoE	Cable managed bracket, Heater, motorized zoom & focus. ATR on SM3i only
VN7XEHi-HVFAL12 VN7XEHi-HVFAL50	D1, 30fps	2.8-12mm VF 5-50mm VF	30m 50m	12VDC/ PoE	Cable managed bracket, Heater, $\mu$ -SDHC Card slot, Effio-E, 2DNR, 0 lux, ATR, HLC, Intell. IR

## Super Dome IP Cameras IP66



Model	Resolution	Lens	IR Distance	Power	Features
VDA110SM3i VDA110SM3i-IR	3MP, 15fps	3.6-16mm VF 3.6-16mm VF	N/A 50m	12VDC/ PoE	$\mu$ -SDHC Card slot, ATR $\mu$ -SDHC Card slot, ATR
VDA110SMi VDA110SMi-IR	1.3MP, 30fps	3.6-16mm VF 3.6-16mm VF	N/A 50m	12VDC/ PoE	$\mu$ -SDHC Card slot

## Indoor Dome IP Cameras



Model	Resolution	Lens	IR Distance	Power	Features
VD101SM3i VD101SM3i-IR	3MP, 15fps	3.7mm	N/A 30m	12VDC	$\mu$ -SDHC Card slot, ATR
VD101SMi VD101SMi-IR	1.3MP, 30fps	3.7mm	N/A 30m	12VDC	$\mu$ -SDHC Card slot
VD101EHi VD101EHi-IR	D1, 30fps	2.8-12mm VF	N/A 30m	12VDC/PoE	$\mu$ -SDHC Card slot, Effio-E, 2DNR, 0.1 lux, ATR, HLC $\mu$ -SDHC Card slot, Effio-E, 2DNR, 0 lux, Intell. IR

## PTZ & Motorized Dome IP Cameras (D1 Resolution)



Model	Type	Lens	IP Rating	Power	Features
VPD370i-I	PTZ	37x Zoom	Indoor	24VAC	0.4lux Color, 0.02lux B&W, DNR, Sens-up, 128 presents, 4 alarm inputs, Heater, 12x Dig Zoom
VPD101i-O	PTZ	12x Zoom	IP66	12VDC	WDR, DNR, Sens-up, 128 presents, 4 alarm inputs, Heater, 12x Dig Zoom, Surface/Flush mount

## Standard IP Camera



Model	Resolution	Lens Mount	Power	Special Features
VC58SM3i VC58SMi	3MP, 15fps 1.3MP, 30fps	C/CS	12VDC/ PoE	SDHC Card slot, ATR SDHC Card slot
VC58EHi	D1, 30fps	C/CS	12VDC/ PoE	SDHC Card slot, Effio-E, 2DNR, 0.1 lux, ATR, HLC